

Generated by Foxit PDF Creator © Foxit Software  
www.foxitsoftware.com For evaluation only

# Understanding the changing epidemiology of paediatric empyema: the relationship with pneumonia

MF Thomas<sup>1,2</sup>, SP Rushton<sup>2</sup>, MDF Shirley<sup>2</sup>, MA Elemraid<sup>3</sup>, JE Clark<sup>4</sup>, R Gorton<sup>5</sup>, DA Spencer<sup>1</sup>



1.1  
Un

2

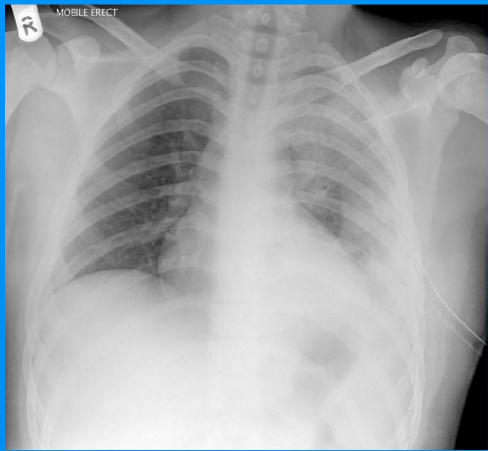
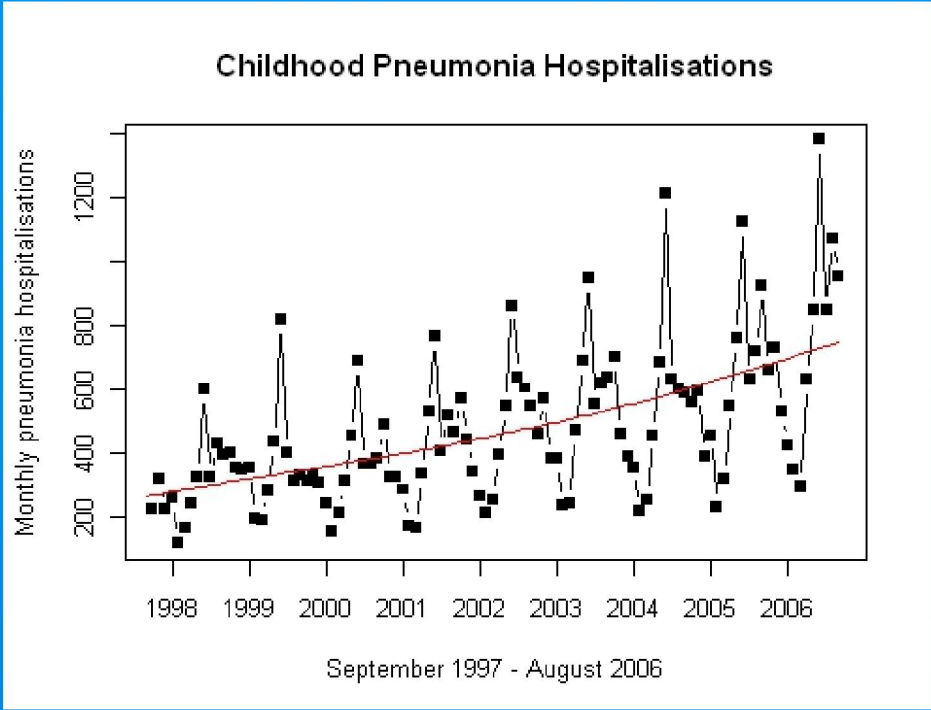
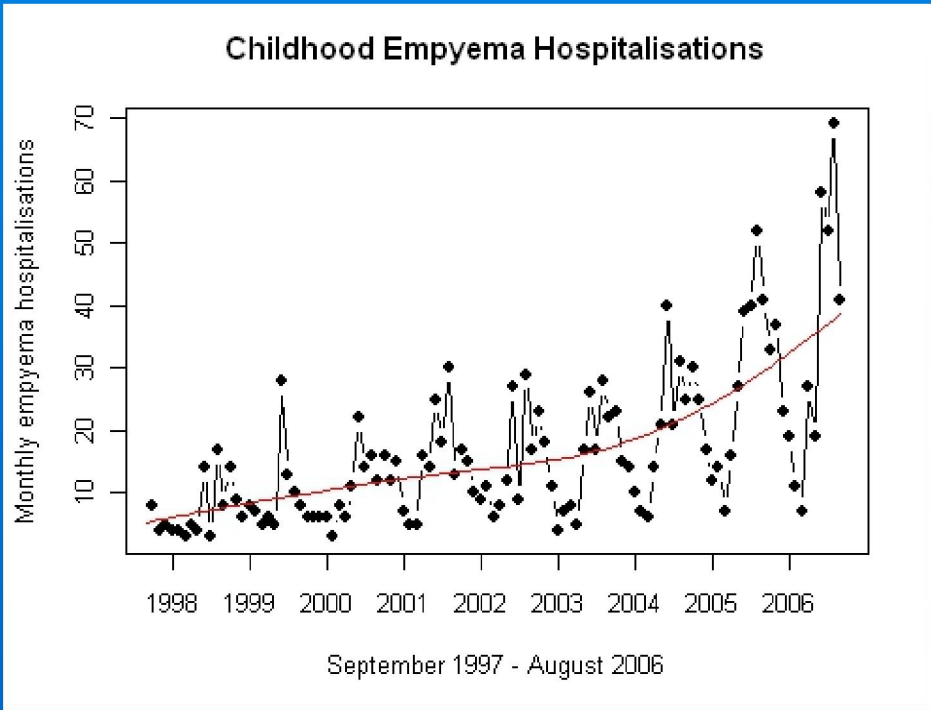


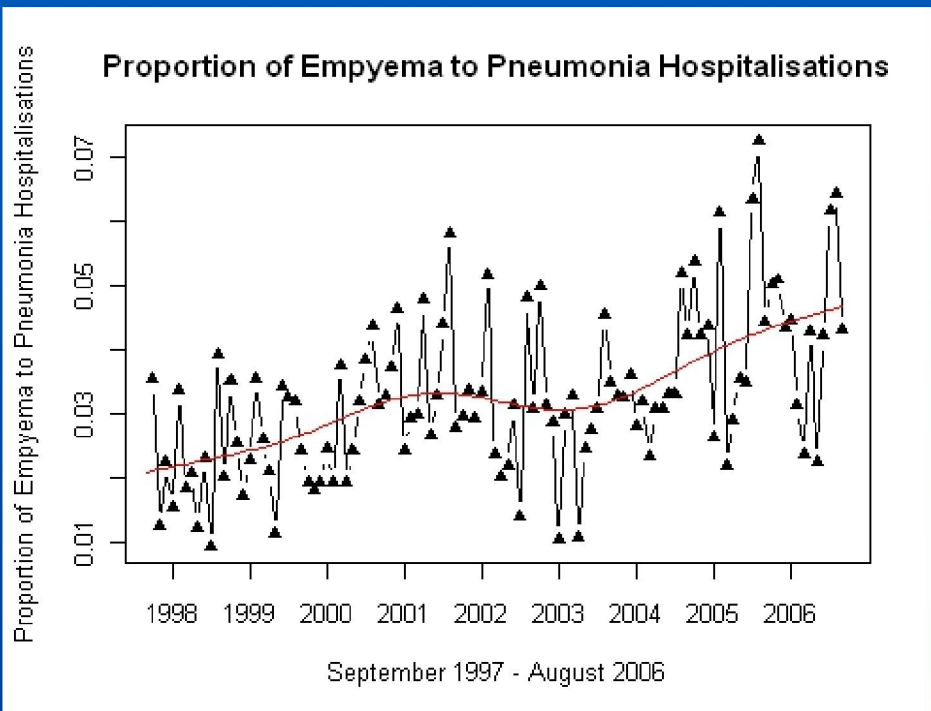
Figure 1: A chest x-ray of a child undergoing pleural drainage of a thoracic empyema



Organism	Co-efficient	95 % CI	P-value
Pneumonia			
GAS	0.005	-0.001;0.011	0.12
<b>S. pneumoniae</b>	<b>0.009</b>	<b>0.007;0.011</b>	<b>&lt;0.001*</b>
S. aureus	0.001	-0.001;0.004	0.21
M. pneumoniae	0.001	-0.0001;0.003	0.09



Organism	Co-efficient	95 % CI	P-value
Empyema			
<b>GAS</b>	<b>0.014</b>	<b>0.003;0.025</b>	<b>0.02*</b>
<b>S. pneumoniae</b>	<b>0.010</b>	<b>0.008;0.013</b>	<b>&lt;0.001*</b>
S. aureus	-0.001	-0.005;0.003	0.49
M. pneumoniae	-0.001	-0.002;0.001	0.50



Organism	Co-efficient	95 % CI	P-value
Proportion of empyema to pneumonia			
<b>GAS</b>	<b>0.00035</b>	<b>0.00003;0.00067</b>	<b>0.03*</b>
S. pneumoniae	0.00003	-0.00005;0.0001	0.53
S. aureus	-0.00007	-0.00018;0.00004	0.21
M. pneumoniae	-0.00003	-0.00008;0.00002	0.19

Figure 3: Monthly pneumonia hospitalisations, empyema hospitalisations and proportion of empyema to pneumonia hospitalisations per month. Individual tables include results of time series modelling for each variable and all included pathogens.

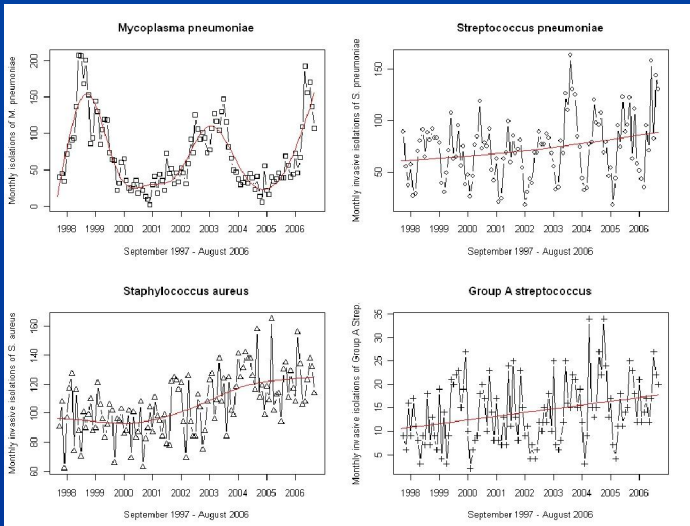


Figure 2: Monthly isolations of pathogens from 1997-2006.

Corresponding Author: Matthew F Thomas, School of Biology, Newcastle University • Email: matthew.thomas3@ncl.ac.uk • Phone: 0191 222 3076