

Standard Operating Procedure

SOP 1

TITLE: Camera and lighting setup for the S&P imaging systems

Contents

| | |
|--|----|
| Scope..... | 1 |
| Procedure..... | 1 |
| General Information | 1 |
| Cleaning..... | 3 |
| Maintenance | 9 |
| Emergency Procedures | 12 |
| Storage | 12 |
| Records | 12 |
| Referenced Documents | 12 |
| Links to other risk assessments or standard operating procedures | 12 |
| Version Control | 13 |

Scope

This is to document the procedure for setting up and maintaining the camera and lights on the S&P imaging systems.

Procedure

General Information

1. Camera settings
 - a. The Canon EOS Rebel T5i on the Cytomat imager, Warmroom Imager and BM5 uses the following settings.



Manual exposure



Shutter speed



Aperture



ISO speed



Exposure compensation

SOP1

Date:

Revision 00







UNCONTROLLED IF PRINTED

XXXX

<insert Unit name>

Issue










Page 1 of 13

-  White balance (fluorescent light 4000K)
-  Auto lighting optimizer
-  Manual Focus
-  Single Shot imaging
-  Metering mode (Centre Weight Average)
-  Large Fine Picture (High Quality)

b. The camera display should look like the image above



c. The Canon EOS Rebel T3i on the Standalone imager uses the following settings

-  Manual exposure
-  Shutter speed
-  Aperture
-  ISO speed
-  Exposure compensation
-  White balance (fluorescent light 4000K)
-  Auto lighting optimizer
-  Manual Focus
-  Single Shot imaging



Metering mode (Centre Weight Average)



Large Fine Picture (High Quality)

- d. The camera display should look like the image below



2. Lamp (circular light bulb)
 - a. The lamps in the imagers are Philips Master TL-E Circular Super 80 32W/840 (Philips order code 559685 15)
3. Lamp shade
 - a. The shade inside the light boxes are provided by S&P robotics

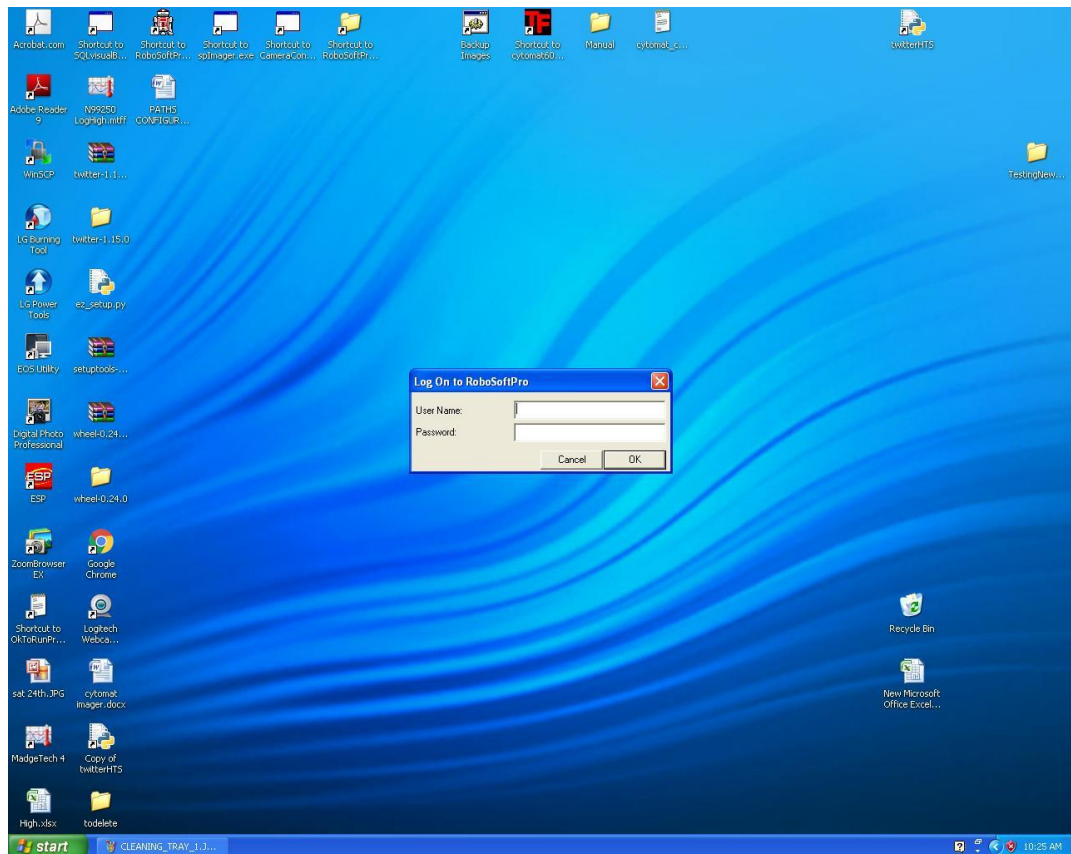
Cleaning

1. The imager plate holder must be cleaned weekly
 - a. This should only be attempted by members of the HTSF
 - b. The robot should be on
 - c. No software should be open on the computer

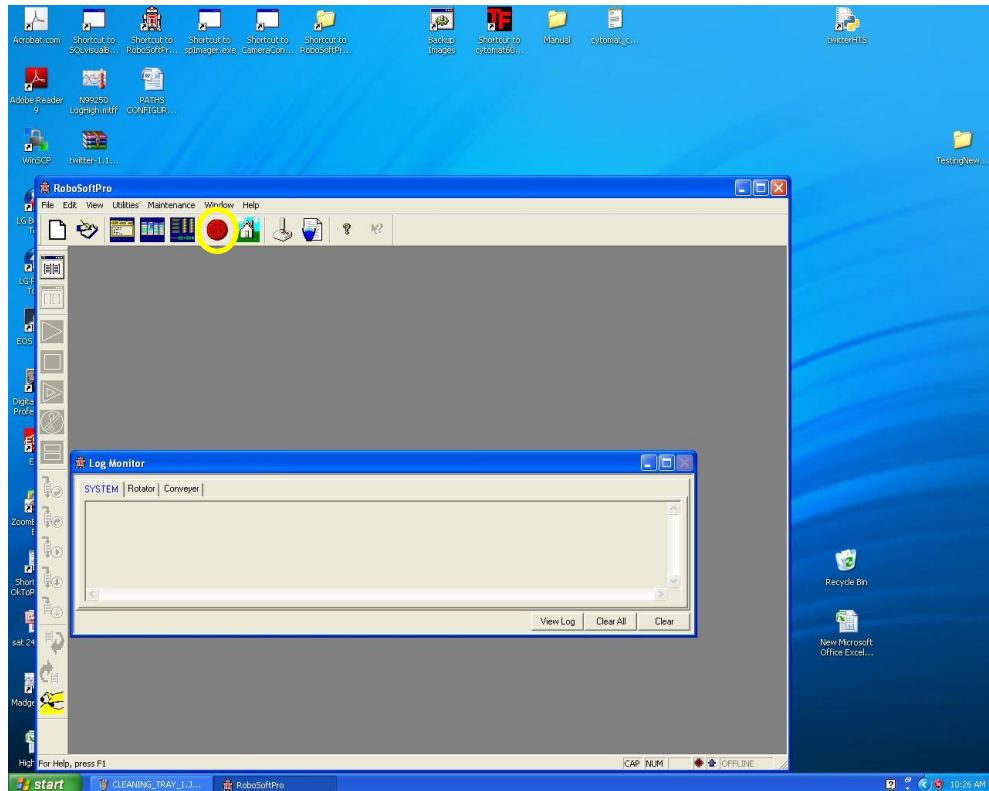
- d. Open the Robosoft software by double clicking on the icon in the yellow circle below



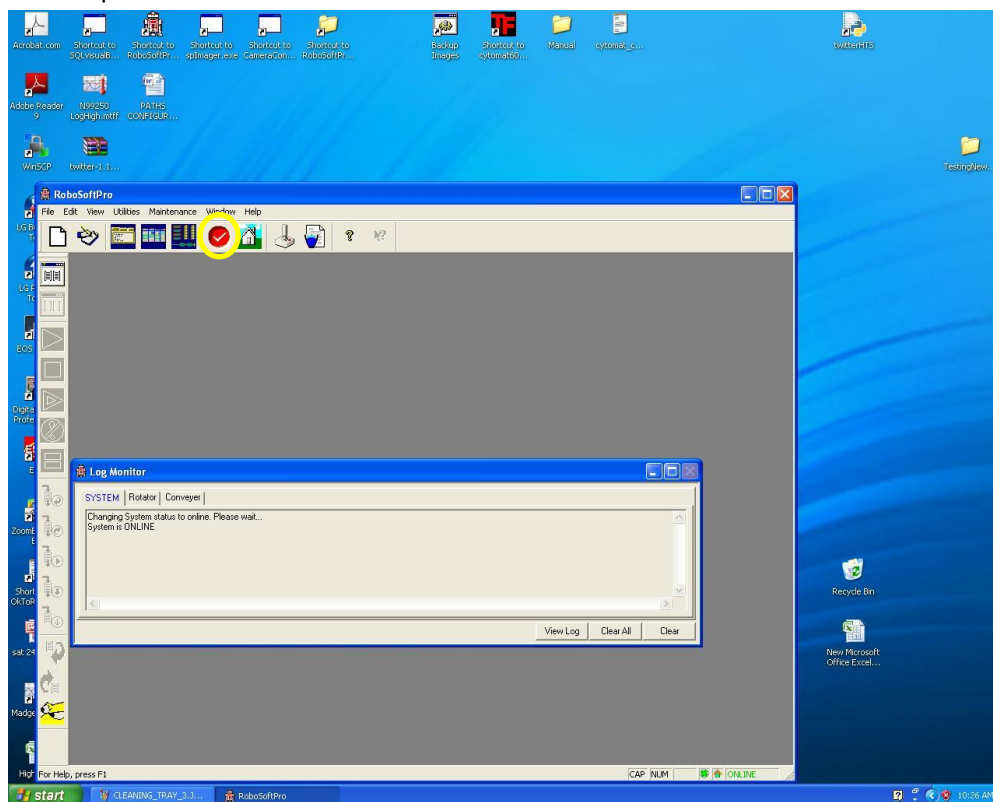
- e. Input the user name sasan, leave the password empty and select OK



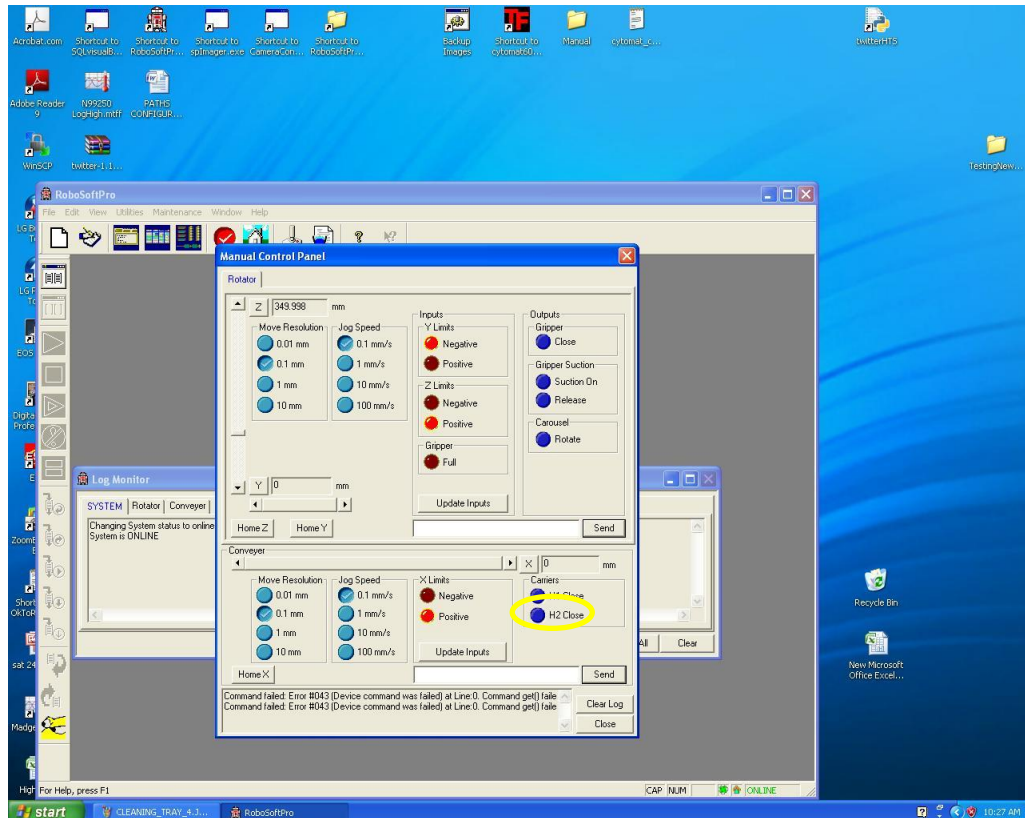
f. Click on the red circle



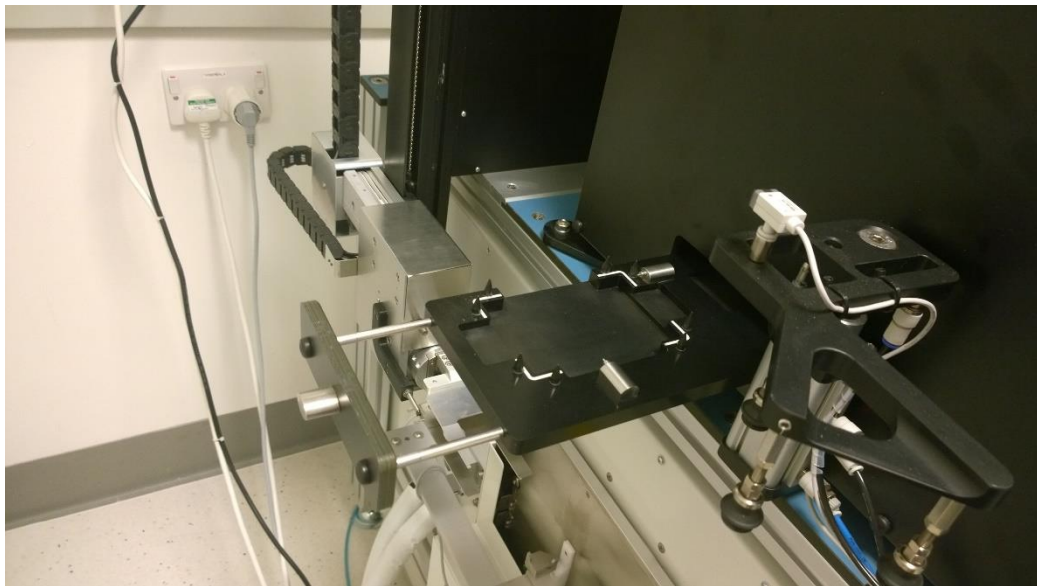
g. There should now be a tick in the red circle. Click on the Joystick to open the manual control panel.



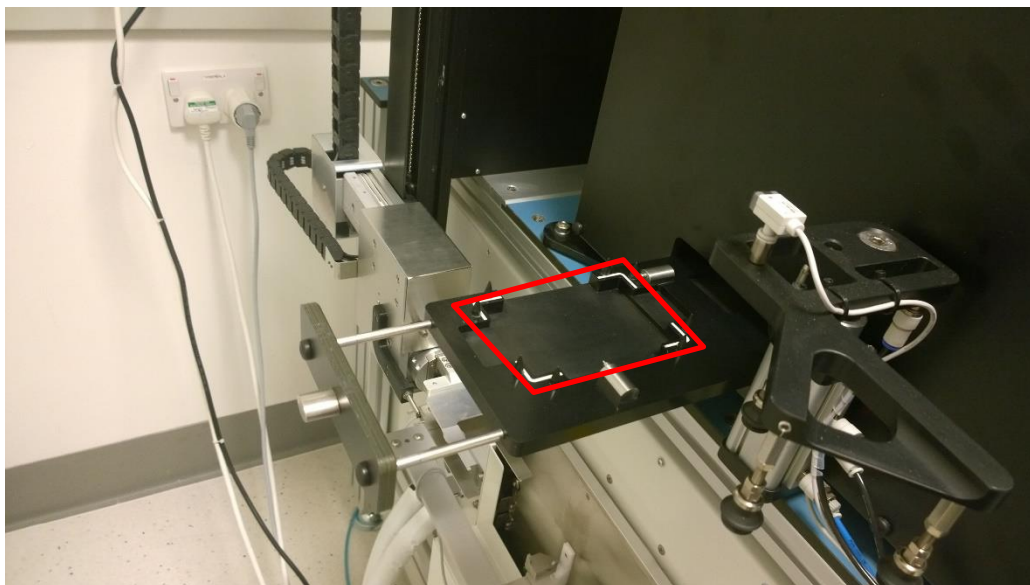
h. Click on H2 Close



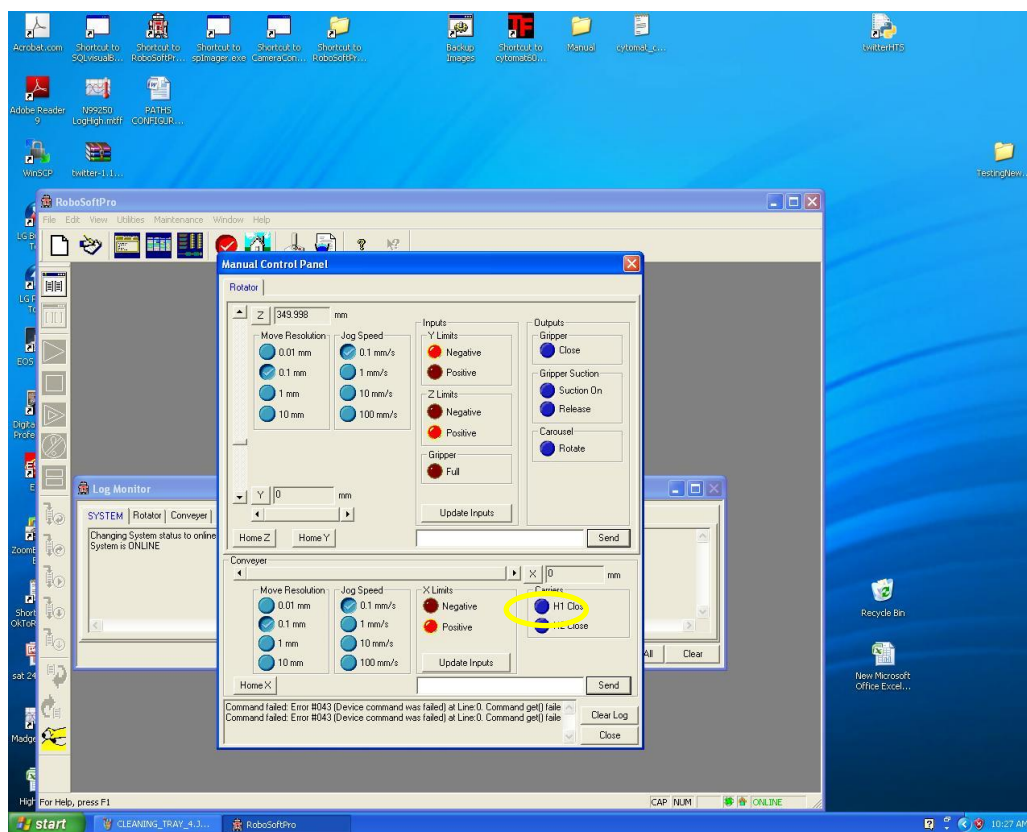
i. There should now be a tick next to H2 Close. The drawer of the imager should slide out



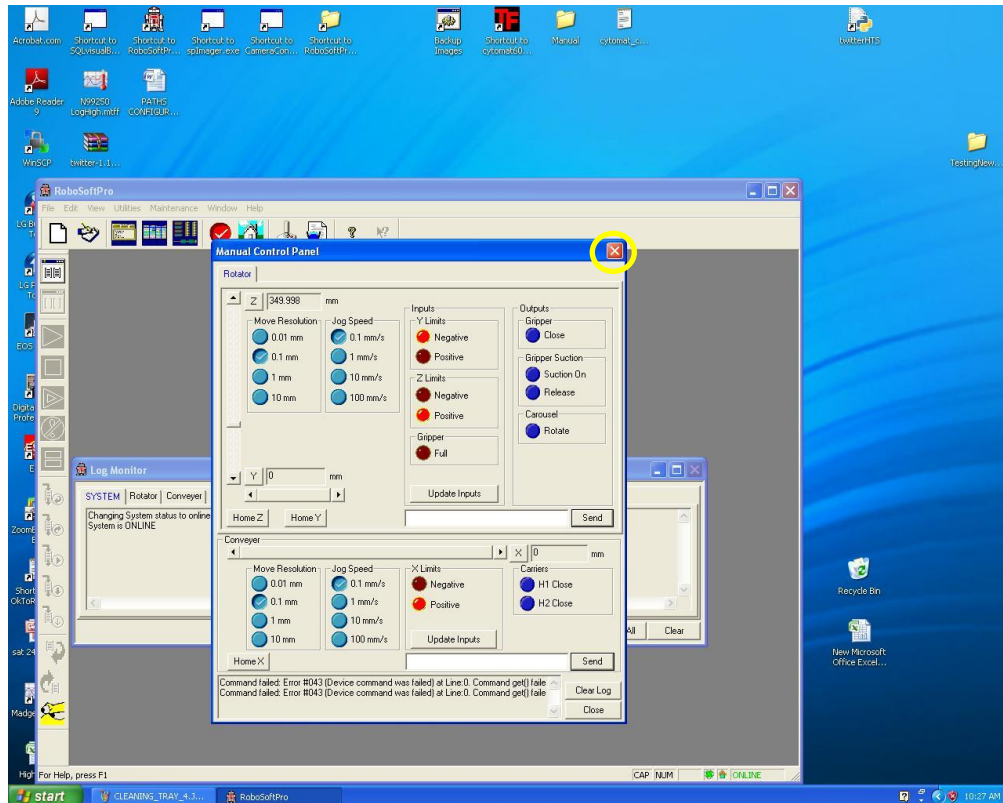
- j. Wipe down the drawer within the red lines with 70% ethanol.



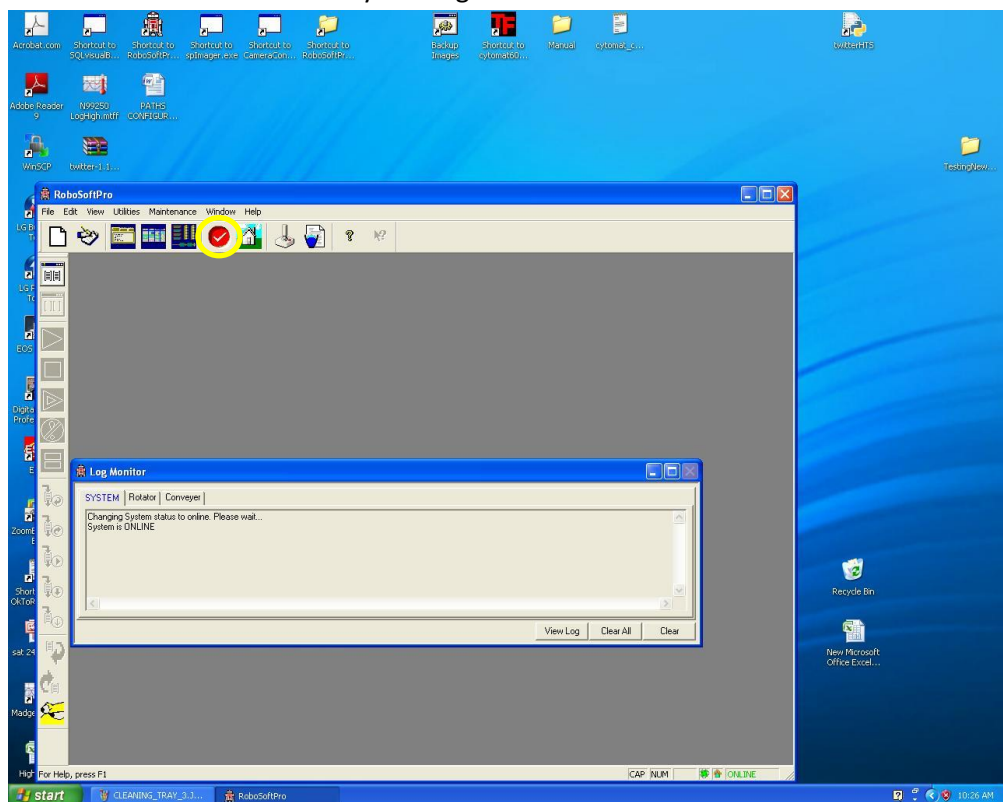
- k. Click on H2 close and the draw will close



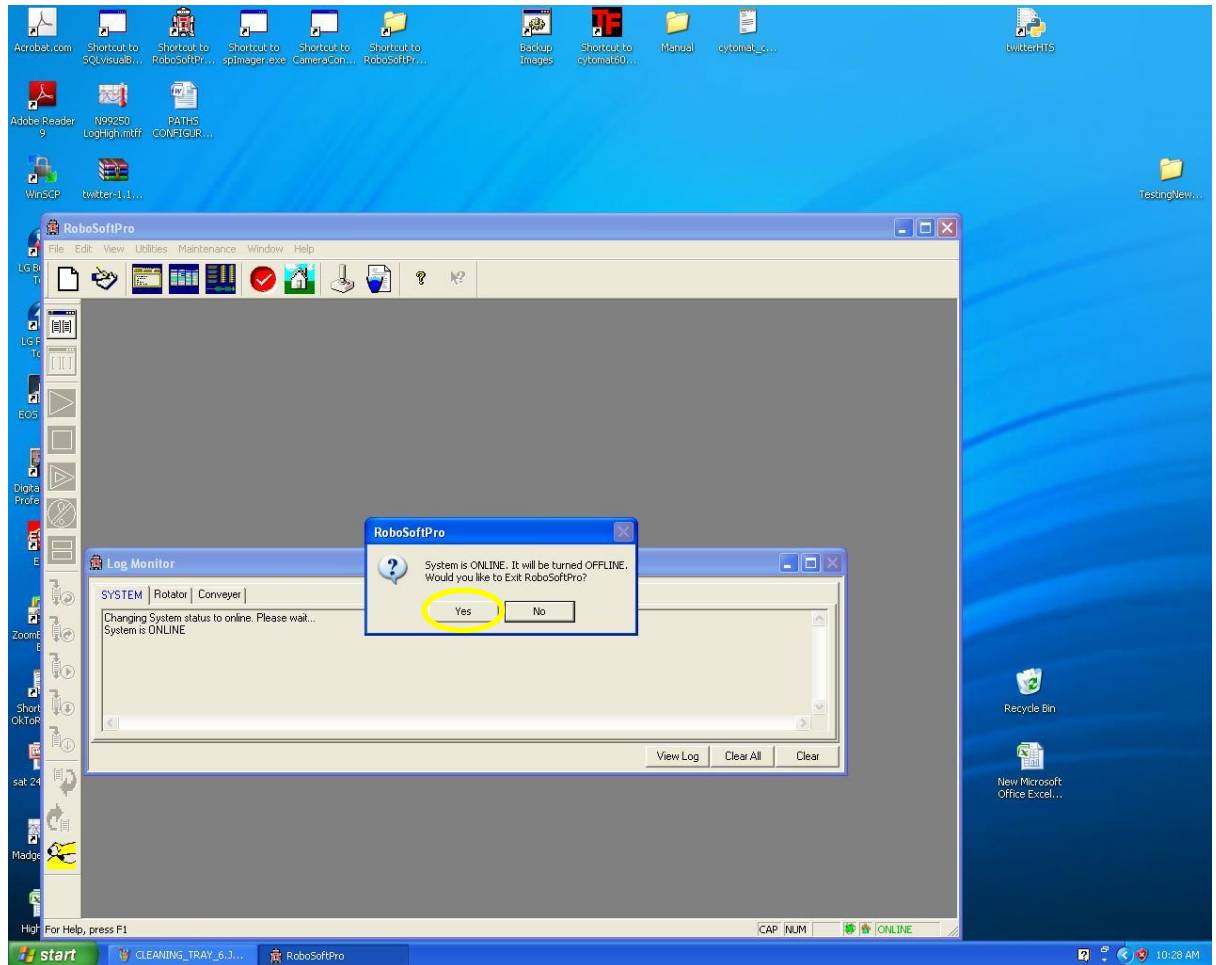
- l. Close the manual control panel by selecting close



- m. Close the robosoft software by clicking on the red cross

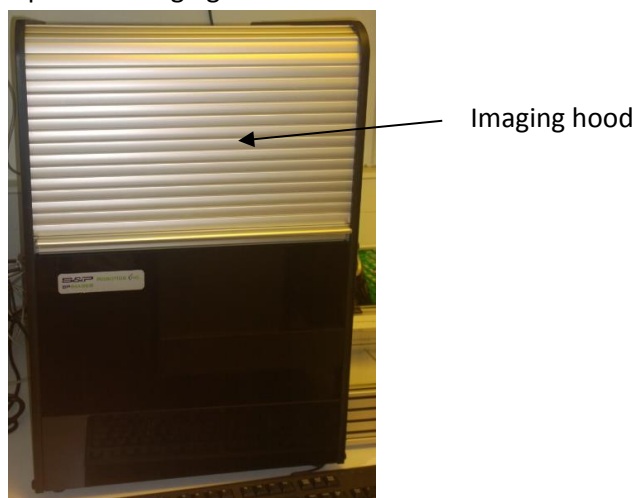


n. Select Yes

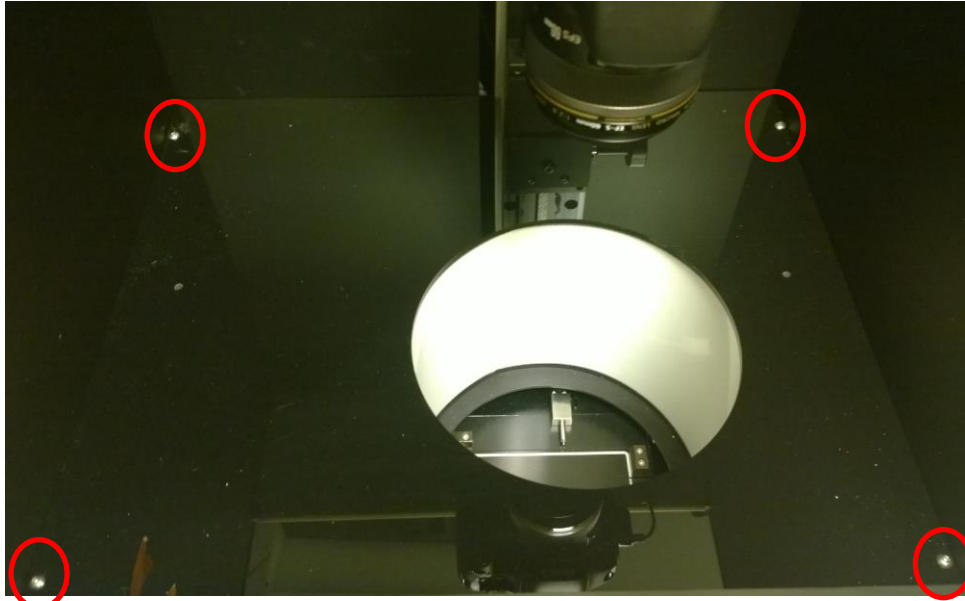


Maintenance

1. The lamps and lamp shades must be replaced every six months
 - a. Open the imaging hood



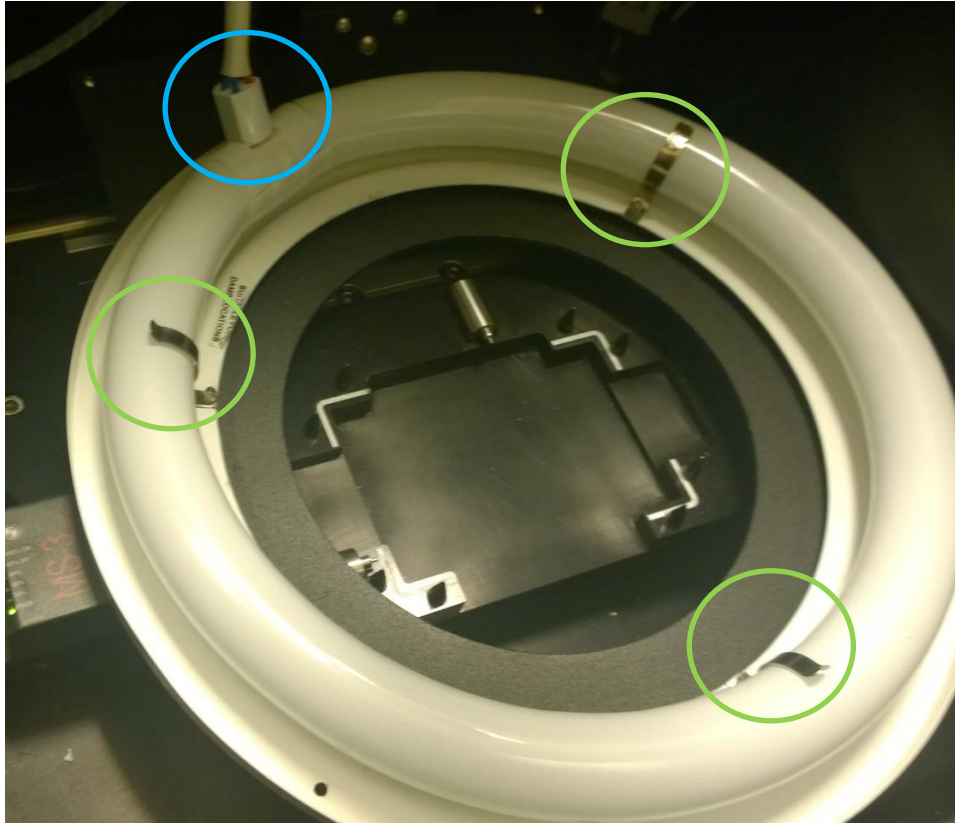
- b. Using a hex tool remove the hex bolts from the corners of the tray and remove the tray highlighted below in red



- c. The lamp shade is free standing and can be easily removed



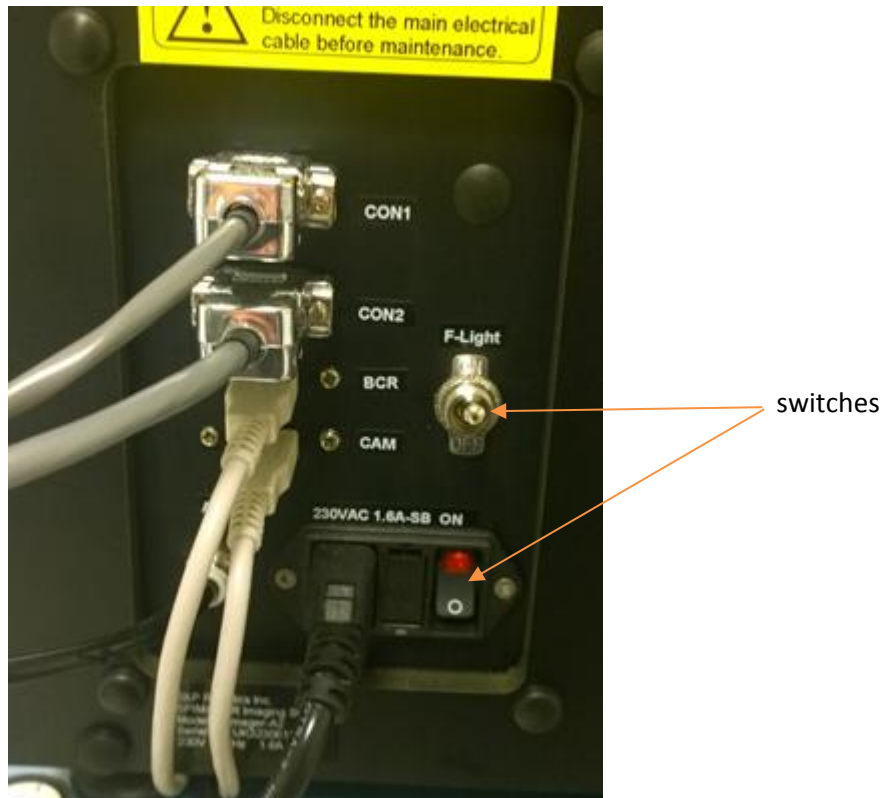
- d. Remove the white power cable (blue circle) from the circular lamp. Remove the lamp being careful not to damage the metal retaining clips (green circles).



- e. Replace the new lamp again being careful not to damage the metal retaining clips and reattach the white power cable (yellow oval).



- f. Put in a new lamp shade with the overlapping join section placed alongside the power cable.
- g. Turn on the lamp by moving the switches into the position indicated below



- h. Turn off the lamp
- i. Replace the tray and replace the hex bolts
- j. Close the imaging hood

Emergency Procedures

Storage

Records

N/A

Referenced Documents

N/A

Links to other risk assessments or standard operating procedures

RobotWorkRiskAssessment_0.1.docx

Version Control

| From | To | Reason for Change |
|------|----|-------------------|
| | | |

Issued by :

Signature: